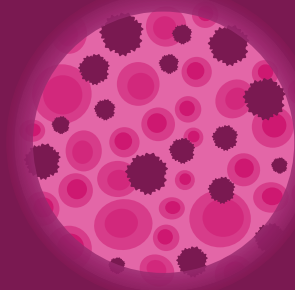


Understanding Chronic Lymphocytic Leukemia (CLL)



What is CLL?



Leukemia is a type of cancer found in the blood and bone marrow and is caused by the rapid production of abnormal white blood cells.¹



In CLL, **cancerous cells crowd the blood and bone marrow** leaving less room for healthy white blood cells, red blood cells, and platelets. This can lead to infection, anemia and bleeding.²



Compared to CLL, where most cancer cells are found in the blood and bone marrow, **small lymphocytic lymphoma (SLL) cancer cells are mostly concentrated in the lymph nodes.**³



The majority of CLL patients have multiple concurrent health conditions (eg, hypertension, heart disease, diabetes), though disease progression and CLL-related complications including infections and second cancers are the primary causes of death.⁴



There are two different types of CLL. The **slower-growing type** can remain stable for years and may not require immediate treatment. The **faster-growing type** is more aggressive and may need to be treated quickly.⁵

CLL Fast Facts



CLL is the **most common type of leukemia** in adults, with an estimated 20,160 new cases in the US in 2022.^{6,7}



Men are nearly twice as likely to have CLL than women.⁸



The average age at time of diagnosis is **approximately 70 years.**⁹



Many patients do not have any symptoms upon diagnosis. CLL is often found in blood tests for unrelated health problems or during a routine check-up.¹⁰



Though **the survival rate for patients varies based on the stage of the disease at diagnosis**, the 5-year survival rate for CLL patients is approximately 87%.^{7,9}

Common Symptoms*

Generally, CLL symptoms develop over time. As the disease progresses, a person may experience^{10,11}:

Fever and night sweats

Weakness and fatigue

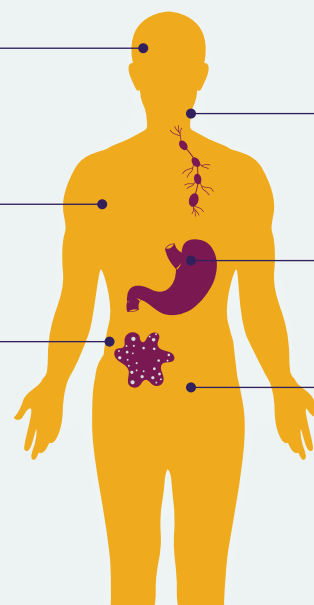
Infections (skin, lungs, kidneys or other sites)

Swollen lymph nodes

Stomach pain

Weight loss

*Symptoms are non-specific and could arise from other less serious conditions.



References

1. American Society of Hematology. Leukemia. <https://www.hematology.org/education/patients/blood-cancers/leukemia>. Accessed April 2022. 2. National Cancer Institute. Chronic Lymphocytic Leukemia Treatment (PDQ®)—Patient Version: General Information About Chronic Lymphocytic Leukemia. <https://www.cancer.gov/types/leukemia/patient/cll-treatment-pdq>. Accessed April 2022. 3. National Cancer Institute. NCI Dictionary of Cancer Terms — CLL/SLL. <https://www.cancer.gov/publications/dictionaries/cancer-terms/def/ctl-sll>. Accessed April 2022. 4. Strati P, Chaffee K, Achenbach S, et al. Disease Progression and Complications Are the Main Cause of Death in Patients with Chronic Lymphocytic Leukemia (CLL) Independent of Age and Comorbidities at Diagnosis. *Blood*. 2015;126(23):5265. <https://doi.org/10.1182/blood.V126.23.5265.5265> 5. Leukemia & Lymphoma Society. Chronic Lymphocytic Leukemia. <https://www.lls.org/leukemia/chronic-lymphocytic-leukemia>. Accessed April 2022. 6. American Cancer Society. What is Chronic Lymphocytic Leukemia. <https://www.cancer.org/cancer/chronic-lymphocytic-leukemia/about/what-is-cll.html>. Accessed April 2022. 7. National Cancer Institute. Cancer Stat Facts: Leukemia — Chronic Lymphocytic Leukemia (CLL). <https://seer.cancer.gov/statfacts/html/clyl.html>. Accessed April 2022. 8. National Organization for Rare Disorders. Chronic Lymphocytic Leukemia. <https://rarediseases.org/rare-diseases/chronic-lymphocytic-leukemia/>. Accessed April 2022. 9. Cancer.Net. Leukemia - Chronic Lymphocytic - CLL: Statistics. <https://www.cancer.net/cancer-types/leukemia-chronic-lymphocytic-cll/statistics>. Accessed April 2022. 10. American Cancer Society. Signs and Symptoms of Chronic Lymphocytic Leukemia. <https://www.cancer.org/cancer/chronic-lymphocytic-leukemia/detection-diagnosis-staging/signs-symptoms.html>. Accessed April 2022. 11. Leukemia & Lymphoma Society. Chronic Lymphocytic Leukemia Signs and Symptoms. <https://www.lls.org/leukemia/chronic-lymphocytic-leukemia/signs-and-symptoms>. Accessed April 2022.

AstraZeneca

US-64069 Last Updated 4/22